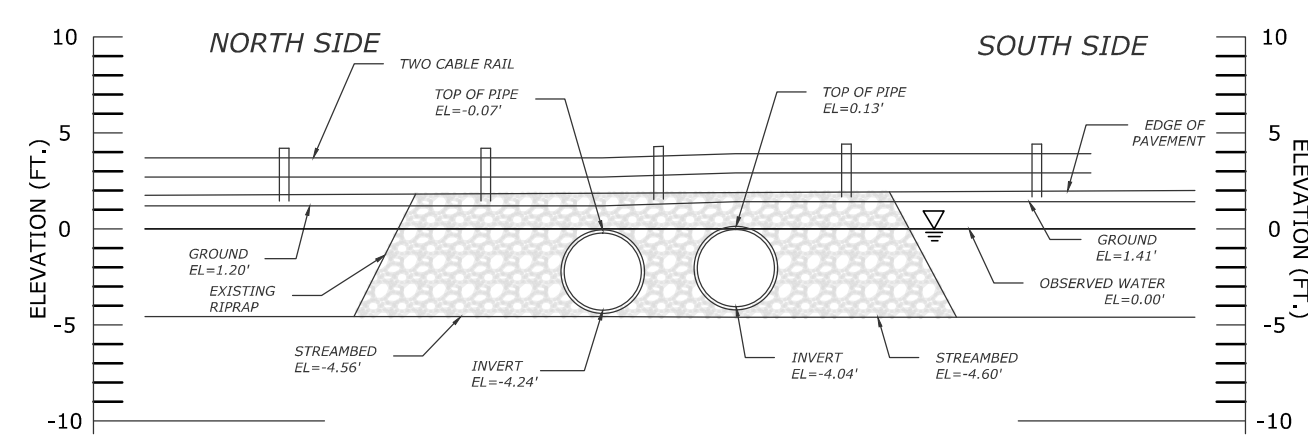
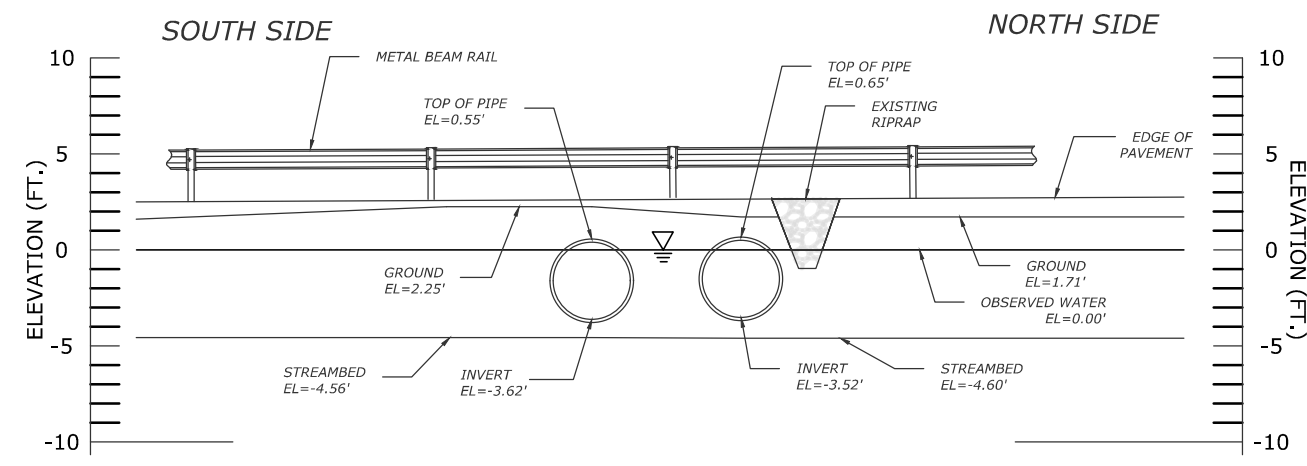


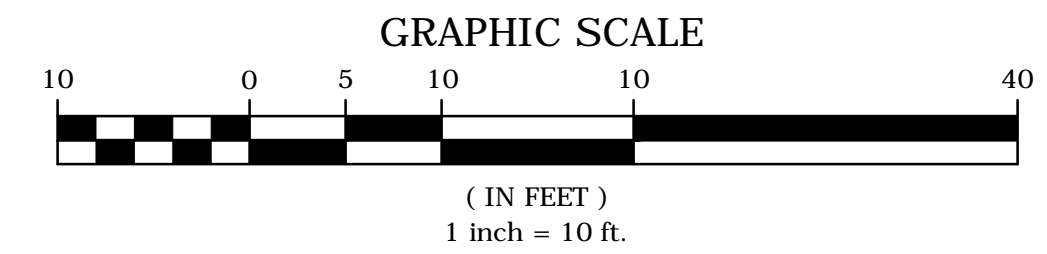
EXISTING PLAN
SCALE: 1" = 10'-0"



WEST ELEVATION
SCALE: 1" = 10'-0"



EAST ELEVATION
SCALE: 1" = 10'-0"



THE INFORMATION, INCLUDING ESTIMATED QUANTITIES OF WORK SHOWN ON THESE SHEETS IS BASED ON LIMITED INVESTIGATIONS BY THE TOWN AND IS IN NO WAY WARRANTED TO INDICATE THE TRUE CONDITIONS OR ACTUAL QUANTITIES OR DISTRIBUTION OF QUANTITIES OF WORK WHICH WILL BE REQUIRED.

		SUPV.	S.R.M.
		DESIGN	S.M.M.
		DRAWN	S.M.M.
		CHECKED	K.O.E.
		DATE	03/15/2017
NO.	DATE	DESCRIPTION	
REVISIONS			

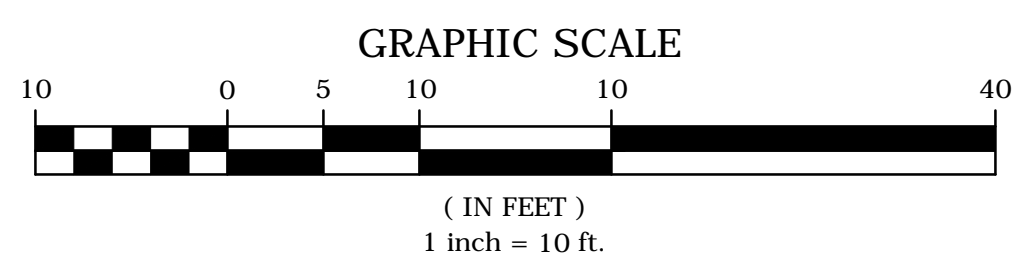
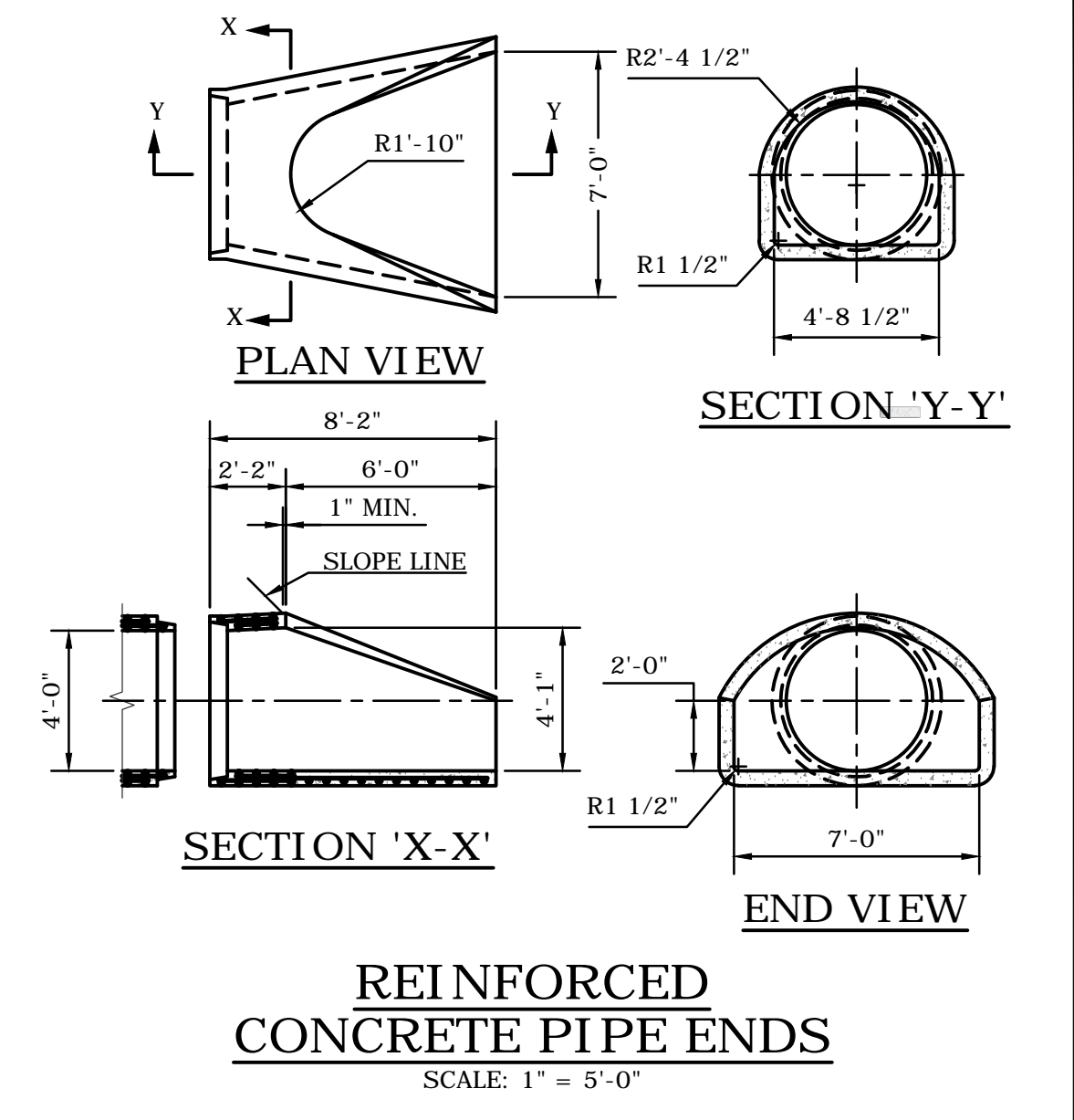
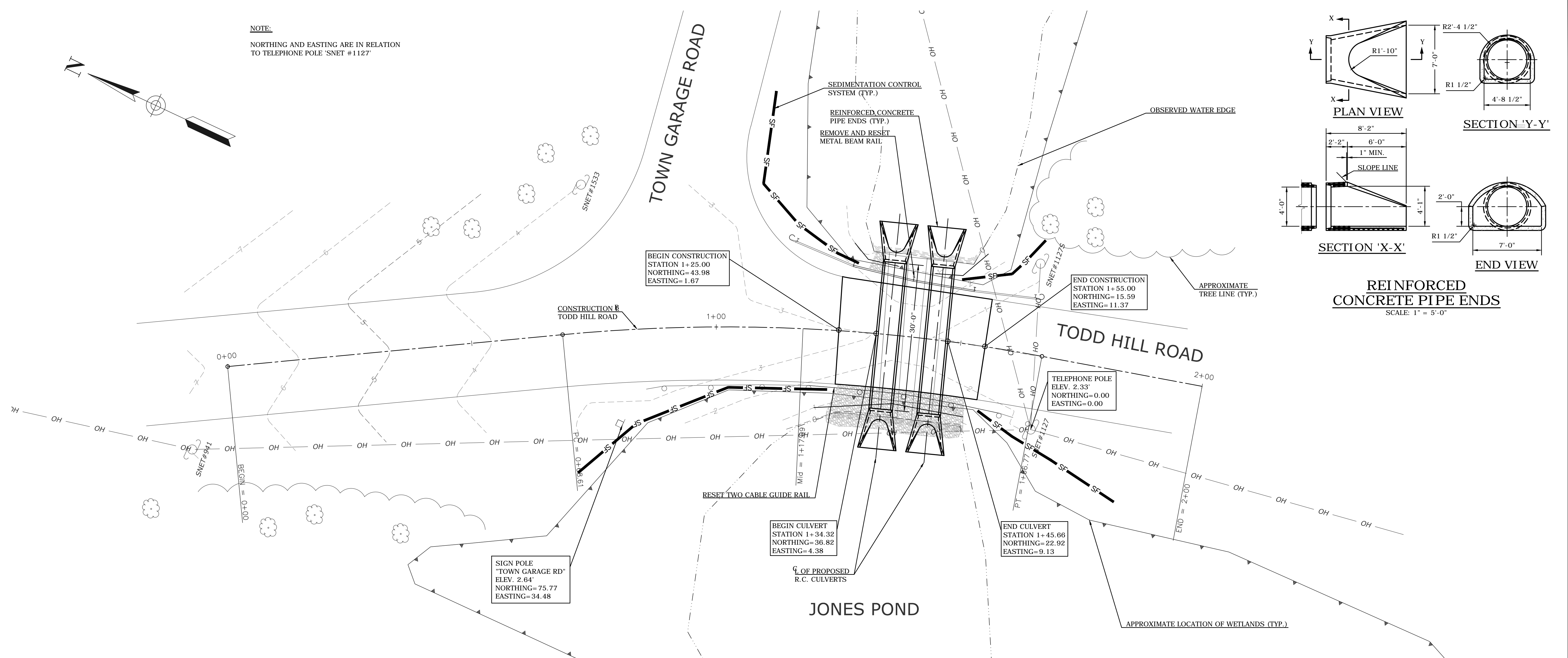
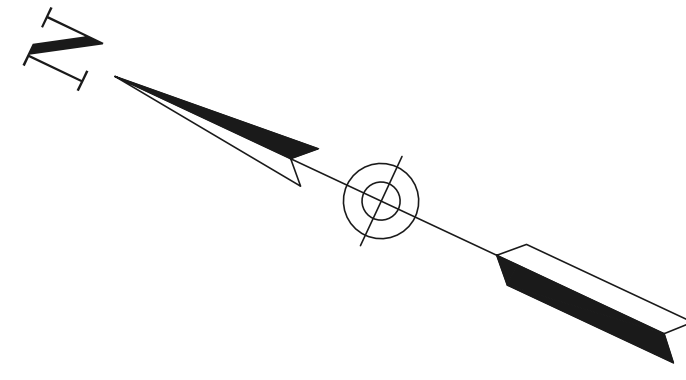
WMC
CONSULTING ENGINEERS
• WENGELL, McDONNELL & COSTELLO •
87 HOLMES ROAD
NEWINGTON, CT 06111
(860) 667-9624

PREPARED FOR
TOWN OF MORRIS
3 EAST STREET
MORRIS, CT 06763

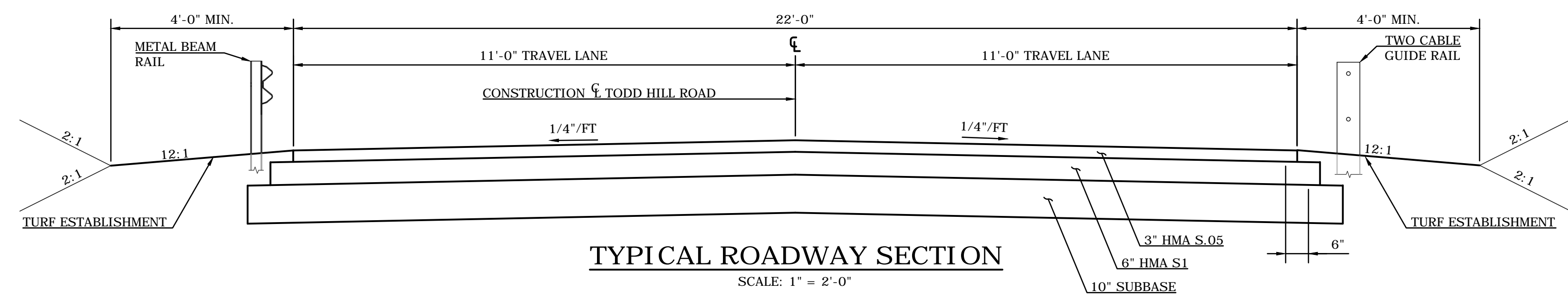
REPLACEMENT OF TODD HILL RD CULVERTS
OVER JONES POND
EXISTING CONDITIONS PLAN

D -	TODD HILL RD	-	-	17023.10	-	SHEET	1
SIZE	PROJECT	FILE NAME	NUMBER	REV.	OF		2

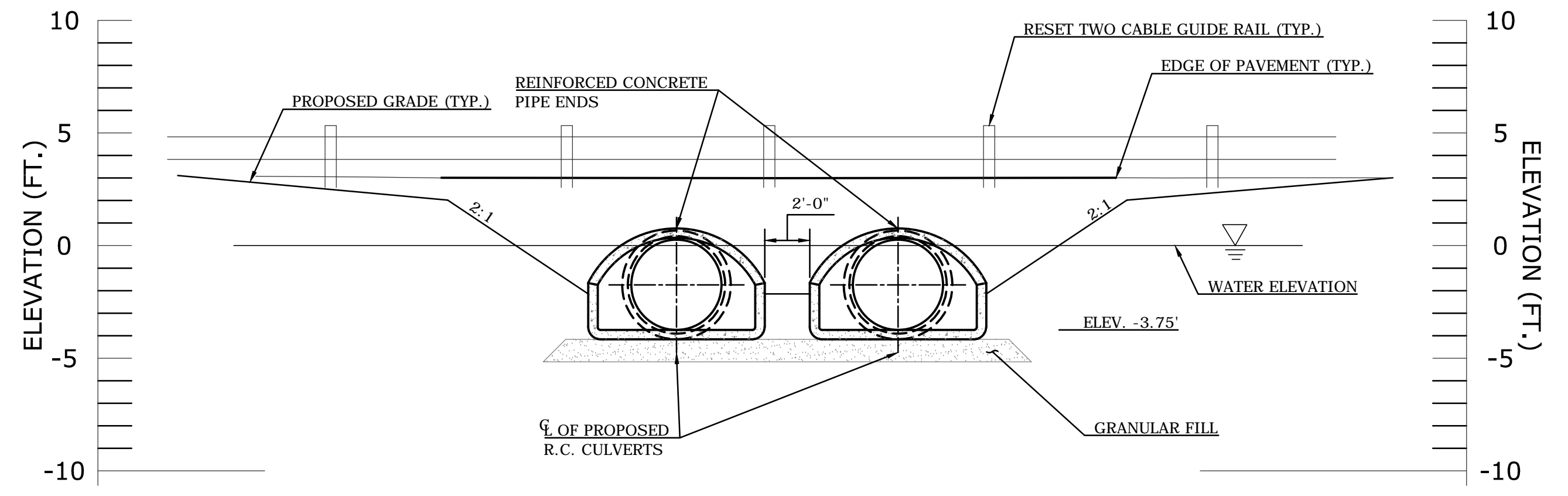
NOTE:
NORTHING AND EASTING ARE IN RELATION
TO TELEPHONE POLE 'SNET #1127'



PROPOSED ROADWAY PLAN
SCALE: 1" = 10'-0"



TYPICAL ROADWAY SECTION
SCALE: 1" = 2'-0"



PROPOSED WEST ELEVATION
SCALE: 1" = 10'-0"

THE INFORMATION, INCLUDING ESTIMATED QUANTITIES OF WORK SHOWN ON THESE SHEETS IS BASED ON LIMITED INVESTIGATIONS BY THE TOWN AND IS IN NO WAY WARRANTED TO INDICATE THE TRUE CONDITIONS OR ACTUAL QUANTITIES OR DISTRIBUTION OF QUANTITIES OF WORK WHICH WILL BE REQUIRED.

REVISIONS		NO.	DATE	DESCRIPTION

SUPV.	S.R.M.
DESIGN	S.M.M.
DRAWN	S.M.M.
CHECKED	K.O.E.
DATE	03/15/2017

WMC
CONSULTING ENGINEERS

• WENGELL, McDONNELL & COSTELLO •
87 HOLMES ROAD
NEWINGTON, CT 06111
(860) 667-9624

PREPARED FOR
TOWN OF MORRIS
3 EAST STREET
MORRIS, CT 06763

**REPLACEMENT OF TODD HILL RD CULVERTS
OVER JONES POND
ROADWAY PLAN**

D -	TODD HILL RD	-	-	17023.10	-	SHEET	2
SIZE	PROJECT	FILE NAME	NUMBER	REV.	OF		